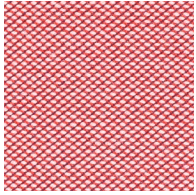


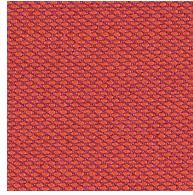
Steelcut Trio 3

**kvadrat**

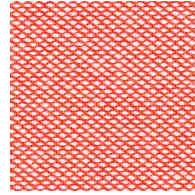
### Steelcut Trio 3



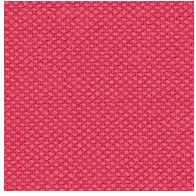
636



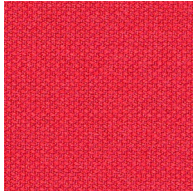
553



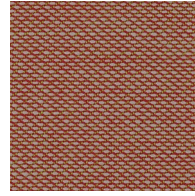
526



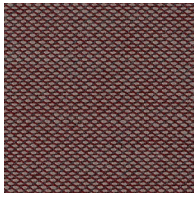
686



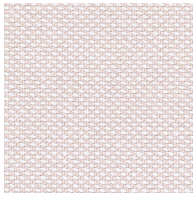
666



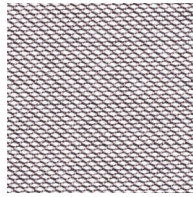
515



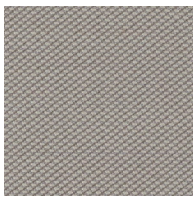
645



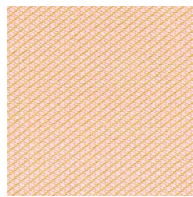
226



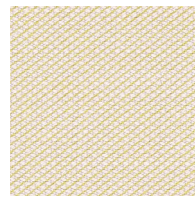
616



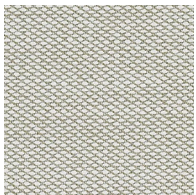
205



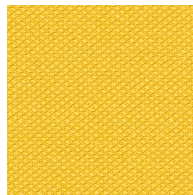
506



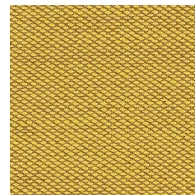
236



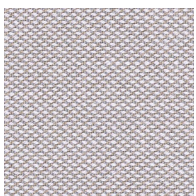
213



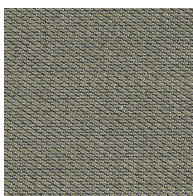
446



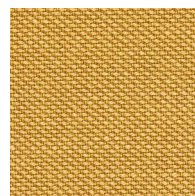
453



246

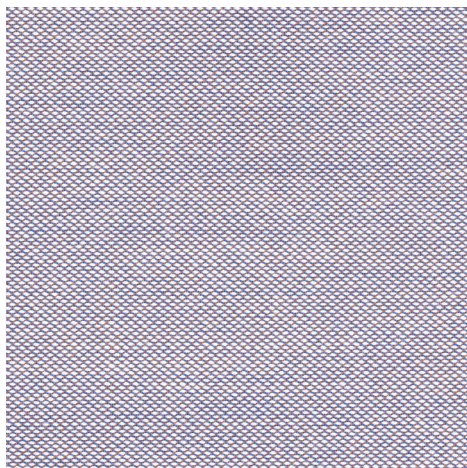


253

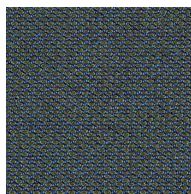


466

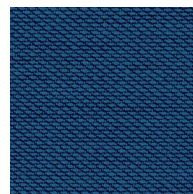
# Steelcut Trio 3



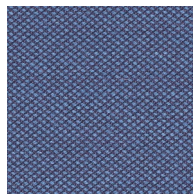
806



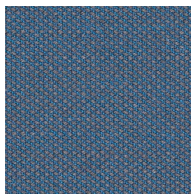
883



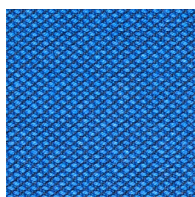
865



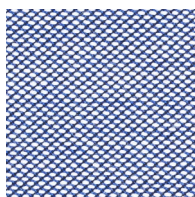
796



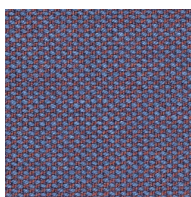
756



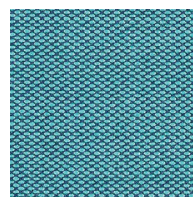
746



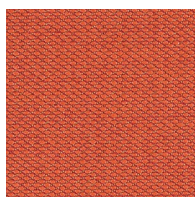
716



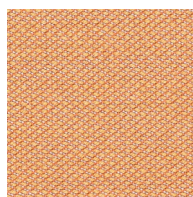
776



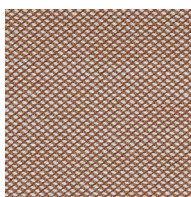
983



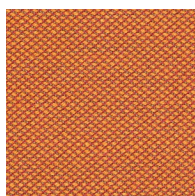
533



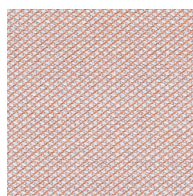
436



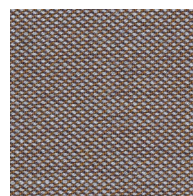
476



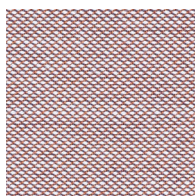
576



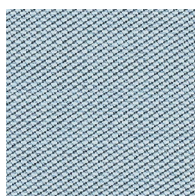
426



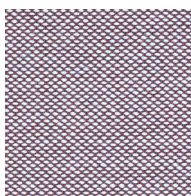
376



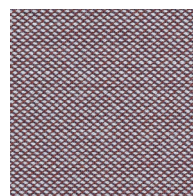
416



713

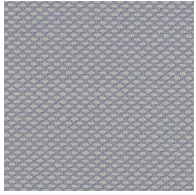


336

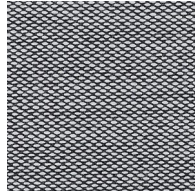


276

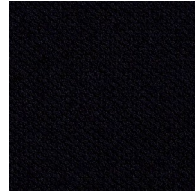
### Steelcut Trio 3



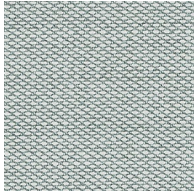
105



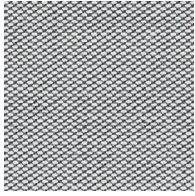
124



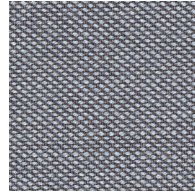
195



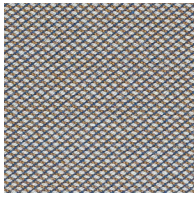
113



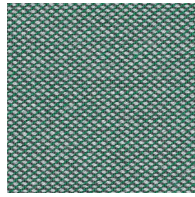
133



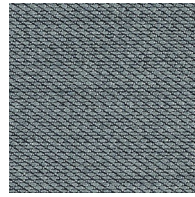
176



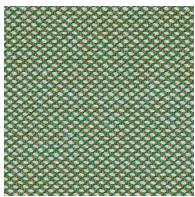
266



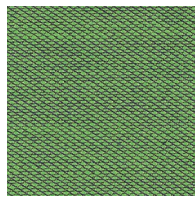
966



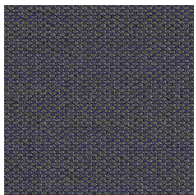
153



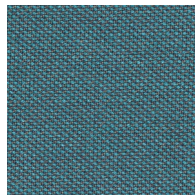
946



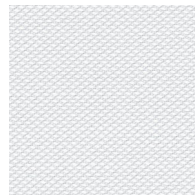
953



283



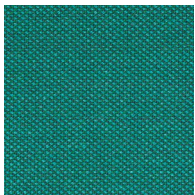
996



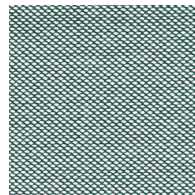
906



383



976



916

## Steelcut Trio 3

Designed by Frans Dijkmeijer and Giulio Ridolfo

### DK

**Anvendelse** Kontorer, hoteller, institutioner, private indretninger. Stor slidstyrke.

**Beskrivelse** 90% ny uld, kamgarn, 10% nylon. Bredde ca. 140 cm. Vægt ca. 770 g/lbm. Garnfarvet. Nuanceforskel kan forekomme.

### Ægkant ⇄

**Slidstyrke:** Ca. 100.000 slidbevægelser efter Martindale metoden EN ISO 12947. **Lysægthed** (ISO) 5-7. **Pilling** (EN ISO) 4. **Gnidægthed** (ISO) tør 4-5, våd 3-5. **Flammesikring:** EN 1021-1/2. BS 5852, part 1. DIN 4102 B2. ÖNORM B1 / Q1. NF D 60 013. UNI 9175 11M. US Cal. Bull. 117-2013. NFPA 260. AS/NZS 3837 Klasse 2. IMO FTP Code 2010:Part 8. Crib 5 og SN 198 898 5.3 kan opnås efter speciel flammesikring (Kopi af testrapport kan rekvireres).

**Vedligeholdelse** Se ISO symboler.

### UK

**Application** Offices, hotels, institutions, domestic use. Great durability.

**Description** 90% new wool, worsted, 10% nylon. Width app. 55 inches (140 cm). Weight app. 770 g/lin.m. Yarn dyed. Colour differences may occur.

### Selvedge ⇄

**Abrasion:** App. 100,000 rubs acc. to the Martindale method EN ISO 12947.

**Lightfastness** (ISO) 5-7. **Pilling** (EN ISO) 4.

**Fastness to rubbing** (ISO) dry 4-5, wet 3-5.

**Flame resistance:** EN 1021-1/2. BS 5852, part 1. DIN 4102 B2. ÖNORM B1 / Q1. NF D 60 013. UNI 9175 11M. US Cal. Bull. 117-2013. NFPA 260. AS/NZS 3837 Class 2. IMO FTP Code 2010:Part 8. Crib 5 and SN 198 898 5.3 when flame protected (Copy of test report available).

**Care** Please see the ISO symbols.

### DE

**Anwendungsbereich** Büros, Hotels, Objectbereich, privaten Wohnbereich, Hohe Strapazierfähigkeit.

**Beschreibung** 90% Schurwolle, Kammgarn. 10% Nylon. Breite ca. 140 cm. Gewicht ca. 770 g/m. Garnefarbt. Farbunterschiede können vorkommen.

### Webkant ⇄

**Scheuerfestigkeit:** Ca. 100.000 Scheuerhübe nach der Martindale Methode EN ISO 12947.

**Lichtechtheit** (ISO) 5-7. **Pilling** (EN ISO) 4.

**Reibechtheit** (ISO) trocken 4-5, nass 3-5.

**Flammschutz:** EN 1021-1/2. BS 5852, part 1. DIN 4102 B2. ÖNORM B1 / Q1. NF D 60 013. UNI 9175 11M. US Cal. Bull. 117-2013. NFPA 260. AS/NZS 3837 Klasse 2. IMO FTP Code 2010:Part 8. Crib 5 und SN 198 898 5.3 bei schwerentflammbarer Ausrüstung (Testbericht verfügbar).

**Pflege** Sehen Sie bitte die ISO Pflegesymbole.

### NL

**Toepassing** Kantoren, hotels, instellingen, de privésefeer. Uitstekende slijtvastheid.

**Omschrijving** 90% scheerwol, kamgaren, 10% nylon. Breedte ca. 140 cm. Gewicht ca. 770 gr/str. m. Garengeverfd. Kleurverschillen kunnen optreden.

### Zelfkant ⇄

**Slijtvastheid:** Ca. 100.000 toeren Martindale EN ISO 12947. **Lichtechtheid** (ISO) 5-7. **Pilling** (EN ISO) 4. **Wrijfechtheid** (ISO) droge 4-5, natte 3-5. **Brandvrijheid:** EN 1021-1/2. BS 5852, part 1. DIN 4102 B2. ÖNORM B1 / Q1. NF D 60 013. UNI 9175 11M. US Cal. Bull. 117-2013. NFPA 260. AS/NZS 3837 Klasse 2. IMO FTP Code 2010:Part 8. Crib 5 en SN 198 898 5.3 wanneer vlamvertragend gefinished (Op aanvraag sturen wij u graag een kopie van het testrapport toe).

**Onderhoud** Zie de ISO symbolen.

### FR

**Domaine d'utilisation** Tissu d'ameublement pour aménagement privé et public. Grande résistance.

**Description** 90% laine vierge, peigné, 10% nylon. Largeur env. 140 cm. Poids env. 770 g/m lg. Teinture sur fil. Ecarts des coloris possibles.

### Lisière ⇄

**Résistance à l'abrasion:** Env. 100.000 révolutions selon le procédé Martindale EN ISO 12947. **Résistance à la lumière** (ISO) 5-7.

**Boulochage** (EN ISO) 4. **Résistance au frottement** (ISO) sec 4-5, mouillé 3-5. **Normes au feu:** EN 1021-1/2. BS 5852, part 1. DIN 4102 B2. ÖNORM B1 / Q1. NF D 60 013. UNI 9175 11M. US Cal. Bull. 117-2013. NFPA 260. AS/NZS 3837 classe 2. IMO FTP Code 2010:Part 8. Crib 5 et SN 198 898 5.3 après traitement d'ignifugation et sur demande (La copie du compte rendu des tests est disponible sur demande).

**Entretien** Voir les symboles ISO.

### IT

**Destinazione d'uso** Rivestimenti per imbottiti, casa e contract. Alta resistenza all'abrasione.

**Caratteristiche** 90% lana vergine, pettinata, 10% nylon. Altezza circa 140 cm. Peso circa 770 gr/mtl. Tinto in filo. Possibili differenze per colore.

### Cimosa ⇄

**Resistenza all'abrasione:** circa 100.000 cicli/metodo Martindale EN ISO 12947. **Resistenza alla luce** (ISO) 5-7. **Pilling** (EN ISO) 4. **Resistenza allo sfregamento** (ISO) condizione a secco 4-5, condizione umido 3-5. **Ignifugazione:** UNI 9175 11M. EN 1021-1/2. BS 5852, part 1. DIN 4102 B2. ÖNORM B1 / Q1. NF D 60 013. US Cal. Bull. 117-2013. NFPA 260. AS/NZS 3837 Classe 2. IMO FTP Code 2010:Part 8. È possibili ottenere la classe Crib 5 e SN 198 898 5.3 dopo speciale trattamento antiinfiammante (Disponibile copia del test). **Manutenzione** Per favore seguire simboli ISO.

### ES

**Aplicación** Adecuado para el uso en oficinas, hoteles, instituciones y hogares. Gran resistencia al desgaste.

**Descripción** 90% lana virgen, peinada, 10% nilón. Anchura aprox. 140 cm. Peso aprox. 770 gr/ml. Teñido en hilado. Posibles variaciones de tintadas.

### Filo ⇄

**Resistencia al desgaste:** Aprox. 100.000 ciclos según el método Martindale EN ISO 12947. **Estabilidad de color a la luz** (ISO) 5-7.

**Relleño** (EN ISO) 4. **Solidez al frotamiento** (ISO) seco 4-5, mojado 3-5. **Resistencia al fuego:** EN 1021-1/2. BS 5852, part 1. DIN 4102 B2. ÖNORM B1 / Q1. NF D 60 013. UNI 9175 11M. US Cal. Bull. 117-2013. NFPA 260. AS/NZS 3837 Clase 2. IMO FTP Code 2010:Part 8. Crib 5 e SN 198 898 5.3 puede conseguirse mediante un tratamiento especial contra el fuego (Copia del informe de ensayos disponible). **Limpieza** Consulte los símbolos ISO.

### JP

**用途** オフィス、ホテル、各種施設、住宅インテリア。耐耗性大。

**詳細** 90% ニューウール。ウーステッド、10% ナイロン。幅:140cm。重量:1mあたり約770gr。糸染め。明色の場合、異質繊維が混在する場合があります。色彩ニューアンスに多少の違いが生じる可能性あり。

### 耳、ふち、⇄

### テスト

**磨耗:** マーチンデール法により摩擦運動約100,000回。EN ISO 12947。 **色褪せ保証:** (ISO) 5-7。 **ピリング** (EN ISO) 4。 **摩擦保証:** (ISO) 乾燥状態 4-5。濡れた状態 3-5。 **耐炎性:** EN 1021-1/2。BS 5852, part 1。DIN 4102 B2。ÖNORM B1 / Q1。NF D 60 013。UNI 9175 11M。US Cal. Bull. 117-2013。NFPA 260。AS/NZS 3837 Class 2。IMO FTP Code 2010:Part 8。特殊耐炎処理により Crib 5、SN 198 898 5.3 に到達可能。(テストレポートコピー入手可能。)

### 手入れ

ISO シンボル参照。

### CN

**适用范围** 办公室, 宾馆酒店, 公共设施, 居家使用。耐耗性大。

**成分** 90%新羊毛, 精纺, 10%尼龙。幅宽约55英寸(140 cm)。重量770克/延米, 纱染色面料。颜色可能稍有色差。

### 织边方向 ⇄

**马丁代尔法**约100,000转。EN ISO 12947。 **光照色牢度** (ISO) 5-7。 **起毛起球** (EN ISO) 4。 **磨擦色牢度** (ISO) 干燥4-5, 湿3-5。 **阻燃性:** EN1021-1/2。BS 5852, part 1。DIN 4102 B2。ÖNORM B1 / Q1。NF D 60 013。UNI 9175 11M。US Cal. Bull. 117-2013。NFPA 260。AS/NZS 3837 Class 2。IMO FTP Code 2010:Part 8。特别耐火处理时Crib 5, SN 198 898 5.3 可以满足。(可提供测试报告副本)。 **维护** 请参照ISO标志。



10 year warranty